



## Process Management Tool – WebI ACTY'S ORARIO –

# WebI ACTY'S ORARIO

# 17.0

NETIS registration number  
by Ministry of Land,  
Infrastructure,  
Transport and Tourism  
**KK-170061-VE**

Would you like to escape from spreadsheet software?  
With simple operations like handwriting,  
you can easily create a detailed bar chart.

WebI  
ACTY'S ORARIO  
makes it possible

URL call to associate the project with external information

Milestone Area to display important dates

Task and  
Resource Map to  
display the load  
status of Tasks  
and Resources

Tree View makes  
it easy to edit  
Group hierarchies

Multiple Bars can  
be placed on a  
single Row,  
allowing for  
flexible layout

Load status can  
be seen at a  
glance with piles  
of Resources

**Flexible  
simulation  
with Resource  
leveling  
function**

Analyze activities from various  
perspectives by switching  
between multiple Views

Easy to use with  
mouse operation

Time Analysis  
function  
Resource load  
leveling function

Flexible layout

Easy Resource  
adjustment

Available for any  
type of industry

# Ability 1

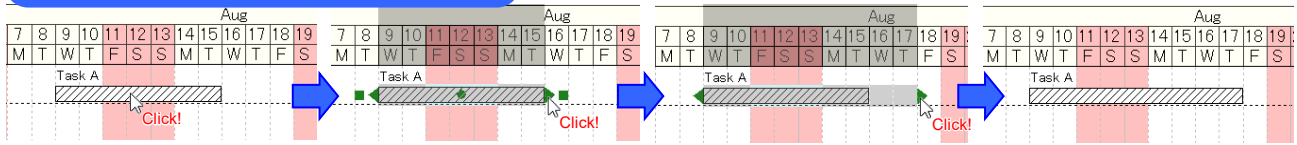
## Improve efficiency in creating and updating Bar Charts

For quick response to unexpected task and consideration of alternative plans

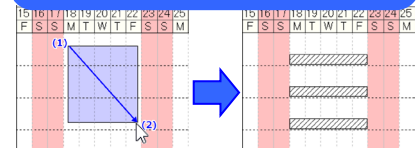
### ■ Easy to create and update activity (Bars) with mouse operation

You can create and update bar charts with intuitive operations. You can also create and update multiple bars at the same time, keeping the bar chart always up-to-date.

#### Change activity duration by mouse dragging



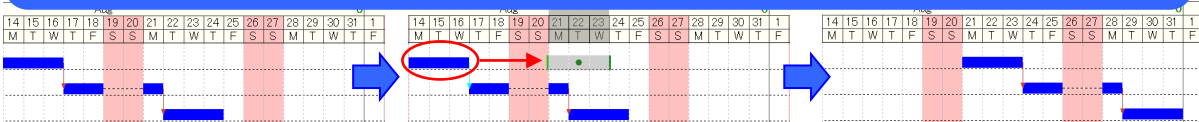
#### Create activities by mouse dragging



### ■ Update subsequent activities collectively

When you change the previous activity, the subsequent activities can also be changed in conjunction with it, enabling you to immediately check and evaluate the impact and delays on the subsequent activities.

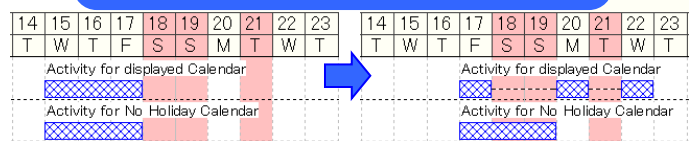
#### If the start date of the earliest activity is delayed by one week, the subsequent activities will also be moved



### ■ Consideration of plans with holidays taken into account, and different use of multiple Calendars

You can automatically update the activity according to the Calendar you set, without being conscious of holidays (work patterns). You can set different work patterns for each activity.

#### Update activities with different holiday patterns



# Ability 2

## Improve Efficiency of Progress Meeting

Always share up-to-date bar charts to streamline progress meetings

### ■ Visualize the gap between plan and progress

You can see the difference between the plan and the progress status for each activity, so you can detect the delay early and take countermeasures.

#### Fill Progress

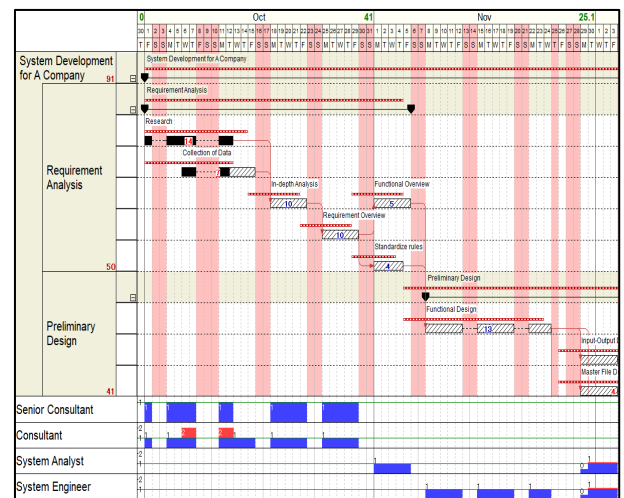
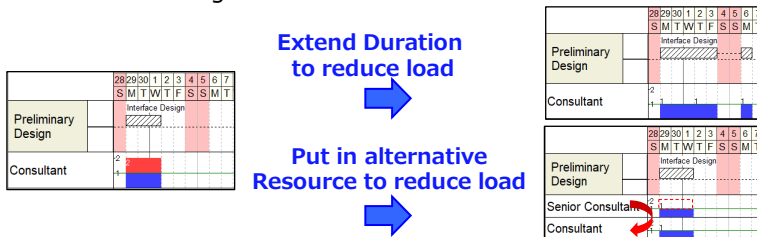


#### Difference between Plan and Progress



### ■ Visualize the load status of resources

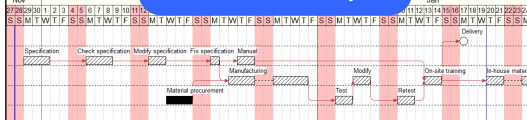
Shows the load status of Resources such as manpower or machinery in conjunction with the plan. You can detect overloads at a glance and take countermeasures.



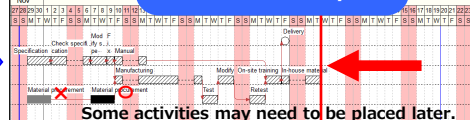
### ■ Time Analysis

Calculate the estimated completion date for the entire plan. You can immediately check and evaluate the impact on the overall activity, such as how delays or interruptions in activity will affect the delivery date and consider next actions.

#### Before Time Analysis



#### After Time Analysis



## Ability 3

# Creating a high-quality Activity Plan

Even complicated activity plans can be created with high quality by using a variety of planning functions

### ■ Manage activities in hierarchized Groups

Activities can be put together into Groups and represented hierarchically.

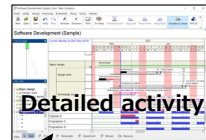
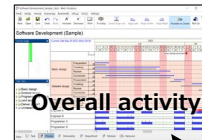
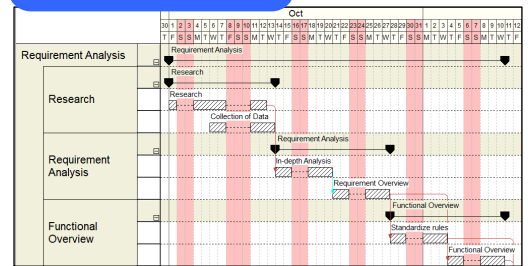
- You can create a Group activity (Bar) which groups activities together.

If you change the activity in the lower hierarchy, the Group activity will also be changed automatically.

You can also move Group activity to change the detailed activities.

- The progress of activities at lower hierarchies can be rolled up into a Group activity.
- You can output only the necessary Groups when you need them.
- You can hide detailed activities and output only Group activities.

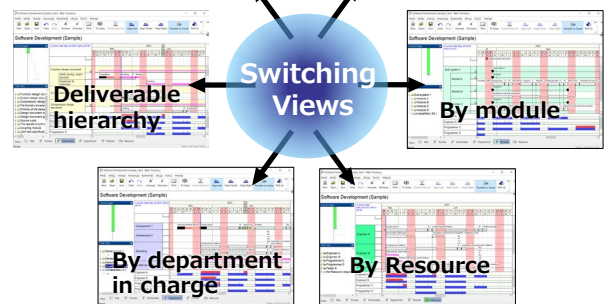
#### Hierarchized bar chart



### ■ Display and adjust plans from different management perspectives

By switching Views, you can check and adjust activities from various perspectives (management classification), such as by production number, organization, resource (manpower, machinery), and deliverable.

By considering multiple perspectives, the quality of the plan can be improved.



### ■ Pick up activity of interest

You can narrow down and display only the activities that match the conditions set in the search window, such as extended duration or start delay.

### ■ Show Critical Path

You can focus on managing the tasks that affect the finish date (delivery date) of the entire project.

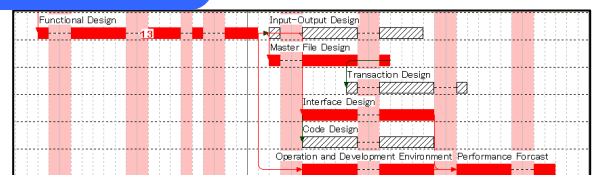
### ■ Call up drawings and documents from activities

External information related to each Project, Group, and Bar (customer's website, activity-related drawings, regulatory documents, instructions, procedure manuals, etc.) can be registered and called up for reference.

### ■ Split screen display function

Bar chart, Milestone, and Histogram Areas can be displayed in two separate upper and lower areas. You can edit bar charts across distant Groups and time periods, which is also useful when editing large bar charts.

#### Critical Path display



## Ability 4

# Finish-oriented Bar Chart printing

Print bar charts and task instructions for different purposes from the same data

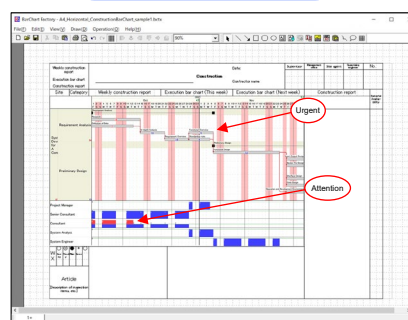
### ■ Freely design bar charts (forms)

You can design a form with form editing / printing tool, specify the output range, display contents and style, and then print a bar chart according to your purpose. You can also fill in comments while viewing the preview image.

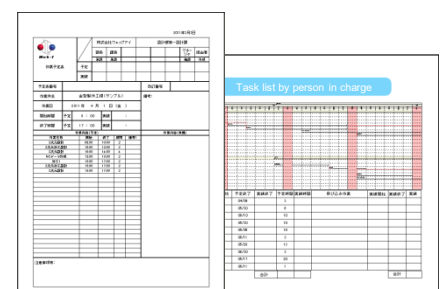
### ■ Output task instructions based on bar charts

You can easily output task instructions and ToDo Lists from the created activity information.

#### Check preview and fill in comments



#### Print bar chart and task instructions on one page



## Usage of Activity Information Utilize activity plans in various situations

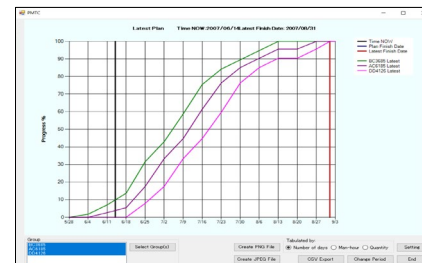
### ■ Data linkage with Excel by editing tabular format

You can refer to and update the data of the bar chart created with WebI ACTY'S ORARIO in tabular format. Editing functions (copy, paste, insert, etc.) allow two-way data exchange with external applications.\*1 It also has functions such as Group (including activity) copy, Group/Activity search, monthly aggregation, Progress Roll Up, and CSV Export.

Task	Department	Sub-Contractor	Begin	View	Milestone	Resource
1	System Development for A	System Development	2021/10/01	Task Bar		
2	Requirement Analysis	Requirement Analysis	2021/11/01			
3	Preliminary Design	Preliminary Design	2021/11/01			
4	Detailed Design	Detailed Design	2021/11/01			
5	Programming	Programming	2021/11/01			
6	Integrated Test	Integrated Test	2021/11/01			

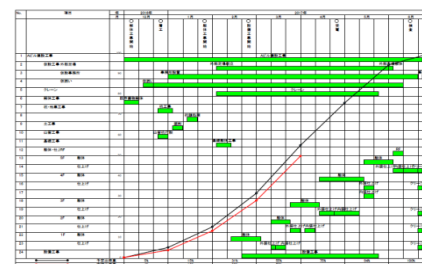
### ■ Output Earned Value graph (S-curve) \*2

Based on the progress of the bar chart created by WebI ACTY'S ORARIO, you can output a graph of the earned value transition (planned and latest) for each subproject. (Earned value graphs can be saved in JPG or PNG format)



### ■ Make WebI ACTY'S ORARIO information into a bar chart in Excel

Output the bar chart created by WebI ACTY'S ORARIO as a figure on Excel. This is a convenient function when you want to add ancillary information or spreadsheet-processed data to a bar chart. \*3 It is also possible to output the bar chart and the earned value graph (S-curve) overlaid.



\*1: There are limitations on the data that can be edited and exchanged with the external parties.

\*2: Either Plan A (Subscription license) or Plan B (Perpetual license) is required.

\*3: Excel 2021, 2024, and 365 are supported.

\*4: Either Plan A (Subscription license) or Plan B (Perpetual license) is required. Excel 2021, 2024, and 365 are supported.

## Major Functions

### ■ Bar chart

Maximum number of registration  
Hierarchies (by Task, by Category): Unlimited\*1  
(By Resource): Fixed at one level  
Bar, Milestone, Constraint: Unlimited\*1

### ■ PERT calculation

Current date can be changed  
Earliest date calculation  
Total Float calculation  
Show Critical Path

### ■ Calendar

Max: 9999  
Editable period: January 1, 1970 - December 31, 2499  
Unit: 1/5/10/15/30/60/180/360/480/720/1440 minutes\*2  
Display style: Western Calendar  
Calendar line and display period settings

### ■ Resource

Maximum number of registration: Unlimited\*1  
Load adjustment: Histogram, Stacked Histogram / Resource  
Availability display  
Resource type: Level/Total

### ■ Display

Types of View: Up to 6 types (by Task, by Category 1 to 4, by Resource)  
Types of symbols\*3: 105 left and right symbols, 48 center symbols, 43 colors

Show Group Bar Progress Line

Bar Layout setting (up to 5 tiers display, select display items from list)

Screen settings (Show/Hide Overall Image, Tree View, Milestone Area or Histogram)

Switch display language (Japanese/English)

Split Screen, Hide rest periods

### ■ Print

Print Wizard

Merge print tool "BarChart Factory"

### ■ Interface

Import/Export (TSV format) \*4

URL call (per Project, Group, or Bar)

Linkage with PREGARE/other applications

### ■ Tabular format activity editing "WBS Editor"

Edit Group/Activity information (copy, paste, insert)

Monthly aggregation, Progress Roll Up

### ■ Other functions

Merge multiple projects, Baseline settings, display progress, select Constraint format, Bar sorting, Bar Chart to Excel conversion function "Excel Bar Chart"  
Automatic Resource load leveling function

\*1: There are restrictions due to hardware.

\*2: Minimum 5-minute increments for setting non-working time slot

\*3: Possible to create your own Symbols (Paid service)

\*4: Paid option

## System requirements

### ■ Operating system

Windows 10 (64bit) \*1

Windows 11 (64bit) \*1

Administrative privilege is required for setup.

\*1 The version of Windows must be within the support period.

### ■ Software

.NET Framework 4.7.2 or later

Microsoft Excel (2021, 2024, 365)\*2

\*2 Required when using Excel Bar Chart and Excel Bar Chart (S-curve).

### ■ Hardware

Display resolution: 1280×1024 or more

1 GB of free hard disk space (data area is required separately)

Any other environments where the above-mentioned operating system runs



**Web I Laboratories, Inc.**

TFT Bldg. East Wing 9th Floor, 3-6-11 Ariake,  
Koto-ku, Tokyo, Japan 135-8071

Tel: +81-3-3570-2391 Fax: +81-3-3570-2393

<https://www.english.webi.co.jp/>

WebI ACTY'S ORARIO® and PREGARE® are registered trademarks of Web I Laboratories, Inc.  
Microsoft, Windows 10, 11 and Microsoft Excel are registered trademarks or trademarks of  
Microsoft Corporation in the United States and other countries.  
The contents of this catalog are subject to change without notice.

**Download the free evaluation version first**

**Please download the evaluation version from  
our website to check the operability and  
planning functions.**

<https://www.english.webi.co.jp/trial-kouteizu>

or **WebI ACTY'S ORARIO**